

Lewis & Irene

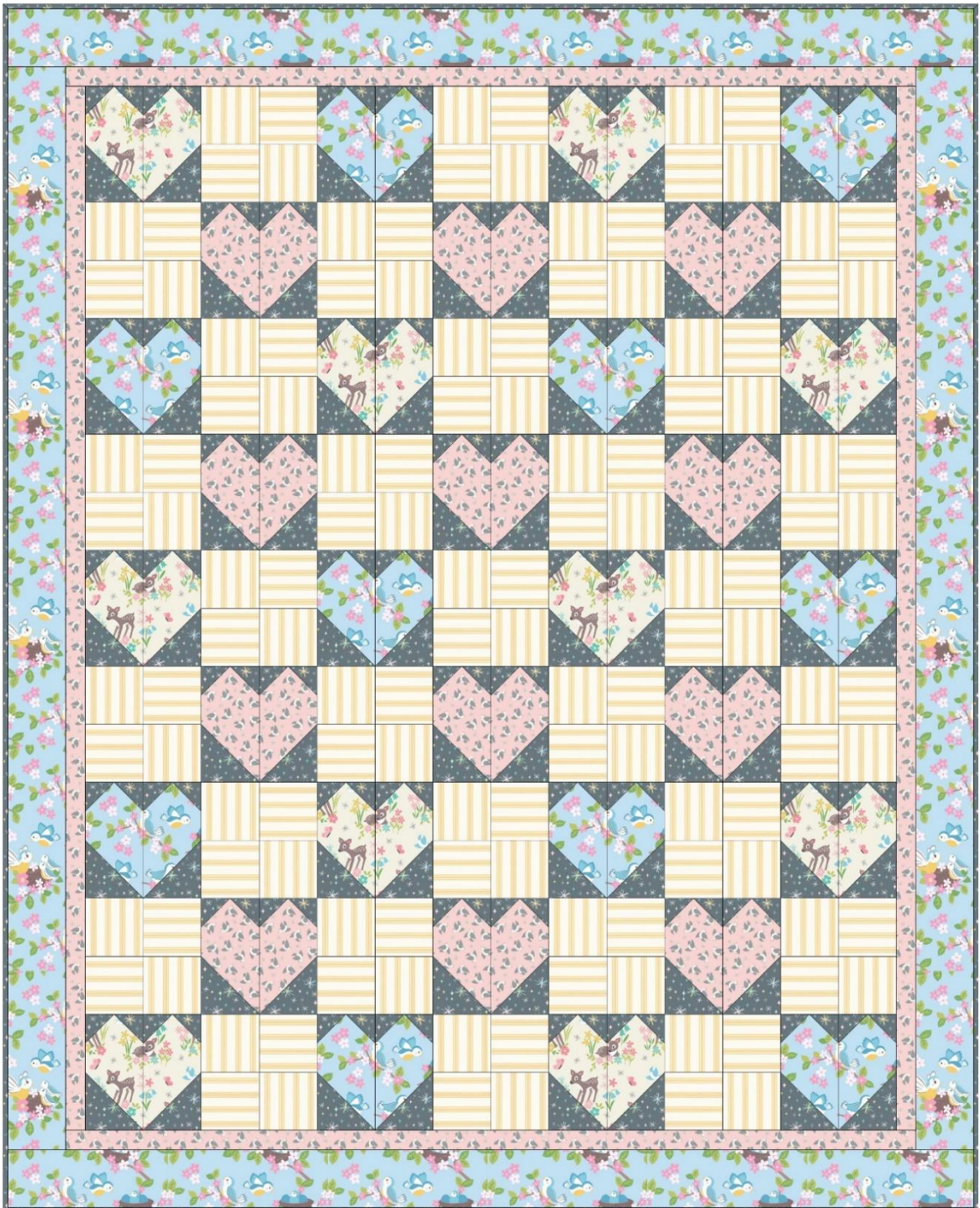
threaded with love

So Darling Quilt

Designed and made by Sally Ablett

Quilt Size: 50" x 62"

Block Size: 6½" x 6½"



Main Diagram)

FABRIC REQUIREMENTS (So Darling Collection)

- Fabric 1: 1yd - 1mtr - A286.1 (Little deer on cream)
 - Fabric 2: 1¼yd - 1¼mtr - A287.2 (Lemon ticking stripe)
 - Fabric 3: 1¼yd - 1¼mtr - A288.3 (Bluebirds on blue)
 - Fabric 4: 1yd - 1mtr - A289.3 (Retro stars on grey)
 - Fabric 5: ¾yd - ¾mtr - A290.3 (Flying bluebirds on rose)
- Wadding and backing 54" x 66"

All measurements include ¼" seam allowances; press each seam as you go

CUTTING

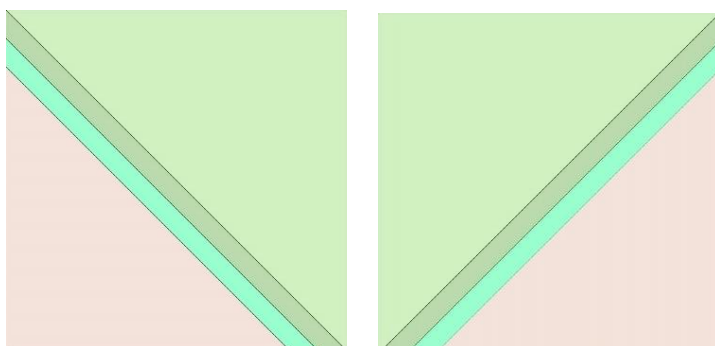
1. From fabric 1 cut:
20 x 3½" W x 6½" H
2. From fabric 2 cut:
124 x 3½" x 3½"
3. From fabric 3 cut:
20 x 3½" W x 6½" H
2 x 3½" x 56½"
2 x 3½" x 50½"
4. From fabric 4 cut:
64 x 3½" x 3½"
128 x 2" x 2"
5. From fabric 5 cut:
24 x 3½" W x 6½" H
2 x 1½" x 54½"
2 x 1½" x 44½"

MAKING UP THE BLOCKS

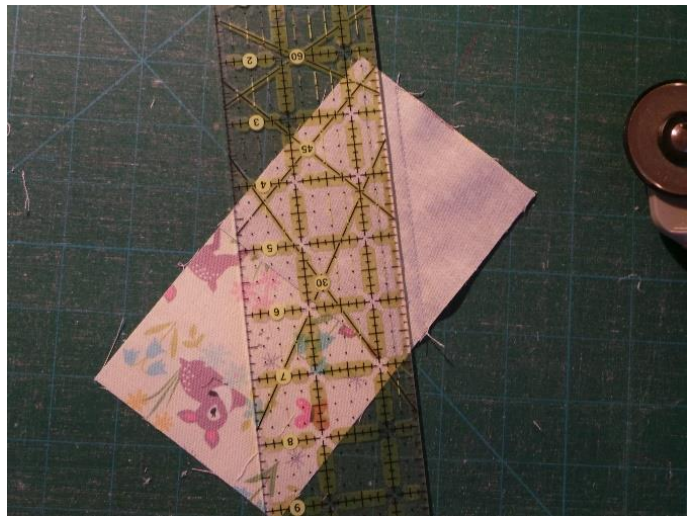


Step one, you will have a left and right to this block

On the back of fabric 4 square 3½" x 3½" draw a diagonal line and then draw two ¼" line out from this



Place this square onto the 3½" x 6½" of fabric 1. You will only stitch the two outer lines and NOT the middle line. This is the one you will cut. Do this to both sides. Save the outer part, as this can be made into a cushion

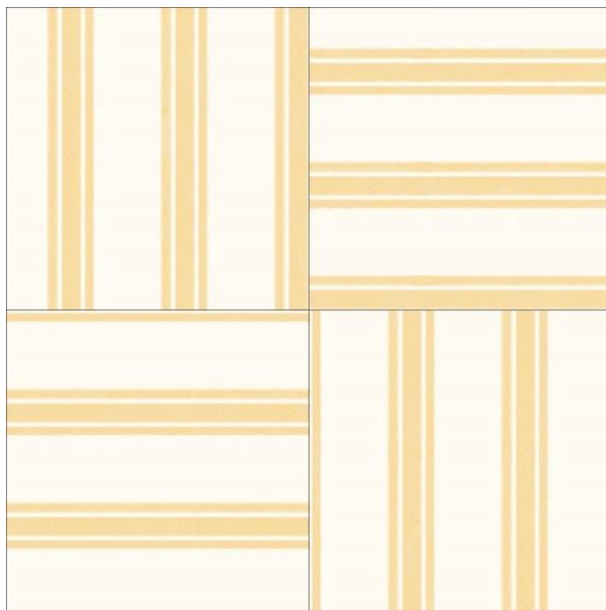


Next part of the block. Draw a diagonal line on the back of the 2" x 2" of fabric 4 and place onto the block as in the photo. Sew down the line and cut 1/4" from the outer stitch line. You will do this twice to each part of the block



Do the same to the other side of the block. Sew the two halves' together to make the block. Make up all the blocks in the same way. In total 32 blocks, 10 blocks with fabric 1, 10 blocks with fabric 3 and 12 blocks with fabric 5

Block 2



Lay out the squares and sew in rows and sew them together to make a square. Make 21 in total

MAKING UP THE QUILT

Lay out the blocks as in the main diagram, sew in rows and then sew the rows together to complete the centre of the quilt



Sew the inner border, sides and then the top and bottom to the quilt

Now sew the outer border, sides and then the top and bottom to the quilt

COMPLETION

When you have sewn your quilt together you can sandwich the quilt top, wadding and backing together

Quilt by hand or machine to a pattern of your liking

Trim off excess wadding and backing and square up the quilt ready for the binding

Use your favourite method from fabric 4 to bind the quilt